

FROM ORLANDO INTERNATIONAL AIRPORT

When leaving the airport, you will see the “Bee Line Expressway” exit on the right hand side. Take the expressway (also known as State Road 528) going west. Once on the expressway, you will go through two tollbooths (\$1.25 each). Take the Universal Boulevard Exit (#2). Turn right onto Universal Boulevard and then a left onto Sand Lake Road. The entrance to the **WYNDHAM ORLANDO RESORT INTERNATIONAL DRIVE** is on the left-hand side of Sand Lake Road.

FROM FLORIDA TURNPIKE

Exit from the Turnpike at I-4. Take I-4 West to Exit 74A – Sand Lake Road. Turn left at Sand Lake Road. Pass through the International Drive Intersection; the Hotel entrance is 2nd turn on the right.

FROM I-4 – HEADING WEST

Take Exit #74A (Route 482/Sand Lake Road Exit). Turn left at Sand Lake Road. Pass through the International Drive Intersection; the Hotel entrance is 2nd turn on the right.

FROM I-4 – HEADING EAST

Take Exit #74A (Route 482/Sand Lake Road Exit). Turn right at Sand Lake Road. Pass through the International Drive Intersection; the Hotel entrance is 2nd turn on the right.

TAXI & MOTOR SHUTTLE INFORMATION I-RIDE

The I-Ride Trolleys travel exclusively throughout the International Drive Resort Area. The Main line travels the majority of International Drive, 85 convenient stops, arriving approximately every 20 minutes. The Green Line begins and ends on International Drive but primarily travels along Universal Boulevard with 22 convenient stops ending at SeaWorld, arriving approximately every 30 minutes.

FARES Single fare \$2.00; Senior Citizen (65 and over) fare is .25 cents; Kids up to 3 years old ride free. Kids (3 -9) is \$1.00.

Unlimited Ride Passes: One Day Pass \$5.00 per person; Three Day Pass \$7.00 per person; Five Day Pass \$9.00 per person; Seven Day Pass \$12.00 per person; Fourteen Day Pass \$18.00 per person.

The Hotel is 12 miles and twenty minutes from the Orlando International Airport.

TAXI YELLOW CAB

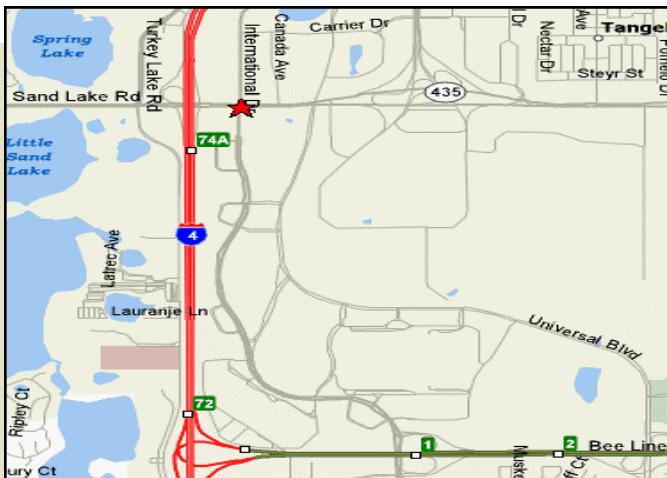
Yellow Cab (Mears) is available at the Hotel and the Airport. One-way cost is approximately \$41.00. Travel time is approximately 20 minutes. TEL: (407) 422-2222

MEARS MOTOR SHUTTLE (24-hour service)

Ages 12 and over \$22.00 one way, \$34.00 roundtrip, ages 4-11 \$17.00 one-way, \$26.00 roundtrip. Shuttle runs every 15-30 minutes from the airport 24 hours no need to make a reservation. Approximate travel time: 45 minutes-1 hour. TEL: (407) 423-5566

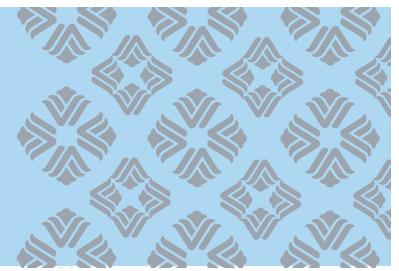
To get transportation in the Orlando Airport follow signs to the baggage claim area, which is located on the second floor of the airport. Continue outside where you will see the white booths. You will pay at the booth and be directed accordingly.

***** The Mears Motor Shuttle and Central Florida Taxi will take approximately 20 minutes to arrive at the hotel.**



**8001 International Drive - Orlando, FL 32819
407-351-2420**

***Please note that the rates for all transportation are subject to change without notice.**



LOCATION

Stay where you play! In the heart of the ICON Park entertainment district with exciting attractions and minutes from the world-famous theme parks. This true Florida resort features lush gardens, winding lagoons, two pools, fitness center, sauna, steam room and multiple on-site dining options. Orlando International Airport is within 12 miles driving distance and downtown Orlando is less than 10 miles away.

FEATURES

- 613 Guest rooms
- 76 Suites
- Resort chic décor room package
- ADA approved

ROOM DETAILS

- Wireless internet access
- Redesigned bathrooms
- Hair dryer
- Sleek furnishings
- In-room coffee makers and refrigerators
- Full-length mirrors
- 40" flat screen TV
- AM/FM clock radios
- Full-size ironing boards
- Laptop sized in-room safe
- Non-smoking rooms

RECREATION

- State of the art health club
- Sauna and steam room rooms
- Two heated swimming pools
- Hot tub
- Children's playground
- A variety of golf courses within minutes
- Beaches are within an hour and a half drive

RESTAURANTS

- Gatorville Poolside Bar & Grill featuring casual American fare in a tropical setting.
- Lobby Bar serving specialty cocktails, craft beers and Mediterranean influenced small plates.
- Barista proudly serving Starbucks coffee beverages and breakfast to-go selections.



MEETING SPACE HIGHLIGHTS

60,000 sq. ft. of flexible meeting, banquet and exhibit space. Meeting space is available on one main level for ease of set-up and event coordination.

- Palms ballroom: 18,480 sq. ft. (divides into nine rooms)
- Citrus ballroom: 8,922 sq. ft. (divides into seven rooms)
- Key ballroom: 7,080 sq. ft. (divides into eight rooms)
- Floral ballroom: 6,535 sq. ft. (divides into four rooms)
- Over 14,000 sq. ft. of outdoor space
- Offsite catering at ICON Park

AUDIO VISUAL SERVICES

AV Media, Inc. is the official recommended production, rigging, internet and electrical supplier located on-site at the Wyndham Orlando Resort International Drive. AV Media, Inc. provides a complete line of leading edge audiovisual rental equipment as well as pre-production, design, set, strike, show operator, and coordination of audiovisual and production services for all hotel functions. AV Media, Inc. will partner with you to put together extensive packages and custom competitive proposals to meet the technology requirements for groups of all sizes.

TRANSPORTATION

- Airport: \$34 round trip (reservations required)
- Universal Orlando Theme Park: complimentary
- SeaWorld Orlando: complimentary
- Walt Disney World: \$16 round trip (reservations required)